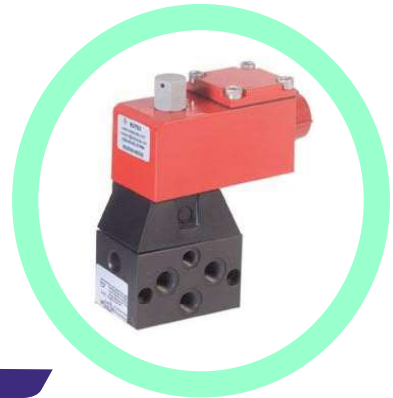


WINTECH ENGINEERS



Your Solution for Industrial valves

BALL VALVE

M.O.C: WCB, CF8, CF8M, CF3M.

Class: 150#, 300#, 600#, 900#

Size: 15mm-400mm.

End Connection: Flanged, Screwed, Socket weld, Tri-clover.

Operation: Lever Gear, Electric, Pneumatic.

Special design: Trunion Mounted, steam jacketed, Fire safe Design.



BUTTERFLY VALVE

M.O.C: C.I, S.G, WCB, CF8, CF8M.

Class: 150#, 300#, PN10, PN16.

Size: 40mm-1200mm.

End Connection: Flanged, Lugged.

Operation: Lever, Gear, Electric, Pneumatic.

Lining: Nitrile, EPDM, PTFE.

Special Design: Metal Seat, Triple Offset, KITZ make.



GATE/GLOBE/ LIFT CHECK VALVE

M.O.C: WCB, CF8, CF8M, CF3, CF3M.

Class: 150#, 300#, 600#, 900#, 1500#, 2500#.

Size: 40mm-600mm.

End Connection: Flanged, Screwed.

Operation: Handwheel, Gear, Electric, Pneumatic.

Special Design: Pressure seal Bonnet, Bellow seal gate valve.





LIMIT SWITCH BOX



AIR FILTER REGULATOR



ELECTRO-PNEUMATIC POSITIONER



AIR LOCK RELAY



PNEUMATIC ACTUATOR



GEARBOX



SOLENOID VALVE



PNEUMATIC VALVE



MOUNTING BRACKET



BUTTERFLY VALVE



BALL VALVE



PRESSURE TRANSMITTER



TEMPERATURE TRANSMITTER



LEVEL TRANSMITTER



INDUCTIVE SENSOR



PHOTO SENSOR



SOLENOID VALVE PULSE TYPE : Size 3/4" to 3" - MOC: Aluminum, CF8, CF8M, (BAG FILTER APPLICATION)

NAMUR TYPE : 5/2 Way , 3/2 Way convertible type (directly mounted your any make Single and double acting actuator)



DIAPHRAGM TYPE SOLENOID VALVE : 2/2 way , Normally closed / open - MOC in : Brass, CF8, CF8M (WATER/AIR APPLICATION-WATER PLANT)

ANGLE SEAT TYPE VALVE : 2/2 way with single / double acting type, screwed end and flanged end - MOC in : Brass, CF8, CF8M

SUGAR MILL VALVES : All type valves.



NON - NAMUR TYPE: 3/2, 5/2, 5/3 way (PNEUMATIC ACTUATOR AND CYLINDER)

ALL PROCESS VALVE : 2/2 , 3/2, 5/2 , 5/3 way solenoid valve and etc...

PNEUMATIC ROTORK MAKE ACTUATOR : Single / Double acting type - 90 Deg and 180 deg rotation



ELECTRICAL ACTUATOR ROTORK/ CAIR MAKE ACTUATOR : Single and Three phase.

ELECTRICAL ACTUATOR HIGHER TORQUE RANGE ROTORK MAKE ACTUATOR : Single and Three phase available.



ROTORK (YTC MAKE) : All type positioner (Pneumatic Positioner, Electro _ Pneumatic positioner, smart positioner and etc..

MANUAL OVER RIDE : DE.CLUTCHABLE / HAND WHEEL TYPE



LIMIT SWITCH BOX : Weather proof/ flame proof with 2 and 4 micro switch and proximity sensor , MOC: Aluminum & SS

PFA LINED BALL & BUTTERFLY VALVE



DAMPER BUTTERFLY VALVE



KNIFE EDGE GATE VALVE



PP/UPVC BALL & BUTTERFLY VALVE





WATER TREATMENT PLANT & ACCESSORIES



R.O PLANT(100-10,000 LPH)

**IRON REMOVAL PLANT,SOFTNER PLANT,D.M PLANT, MIXED BED PLANT,STP & ETP
ACCESSORIES:THERMAX RESIN,UKL PRODUCTS,MEMBRANE(DOW,HYDRONAUTICS,SUEZ)
UF MEMBRANE(DOW,HYDRONAUTICS,TOROY)**



**ALL TYPES OF
WATER TREATMENT RESINS
AVAILABLE**



An ISO 9001:2015

WINTECK ENGINEERS



Factory :

No. 6/1, Senthamil Nagar, Mogappair West,
Chennai - 600 037.

Head Office :

No. 9/13, Vallalar Street, 1st Floor, Senthamil Nagar,
Mogappair West, Chennai - 600 037.

Phone : 044-4555 6213, 98405 79407, 99417 62369

Email : gopi@wintecheng.com | balaji@wintecheng.com | sales@wintecheng.com

Web:www.wintecheng.in

Bengaluru Office :

23, 81st Cross,
Kumaraswamy Layout, 1st Stage,
J.P Nagar PO, Bengaluru - 560 078.

rahman@wintecheng.com
(M) 9514620557